



Iowa Ag News – Cattle on Feed

Iowa Field Office · 210 Walnut Street Ste 833 · Des Moines IA 50309 · (515) 284-4340 · (800) 772-0825
fax (515) 284-4342 or (800) 719-1794 · www.nass.usda.gov/ia

Cooperating with the Iowa Department of Agriculture and Land Stewardship

March 22, 2013

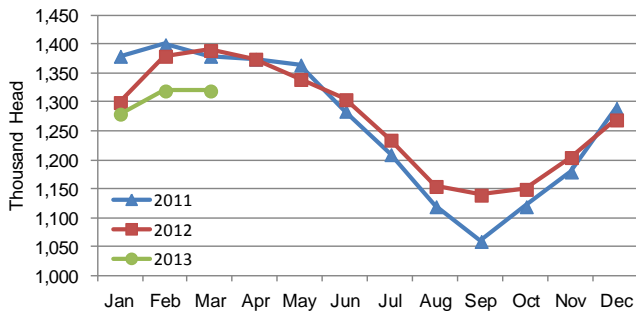
Media Contact: Greg Thessen

Cattle and calves on feed for slaughter market in Iowa for all feedlots totaled 1,330,000 on March 1, 2013 according to the USDA, National Agricultural Statistics Service, Iowa Field Office. The inventory is up 1 percent from February 1, 2013 but down 4 percent from March 1, 2012. Feedlots with a capacity greater than 1,000 head had 640,000 head on feed, unchanged from last month but down 4 percent from last year. Feedlots with a capacity less than 1,000 head had 690,000 head on feed, up 1 percent from last month but down 4 percent from last year.

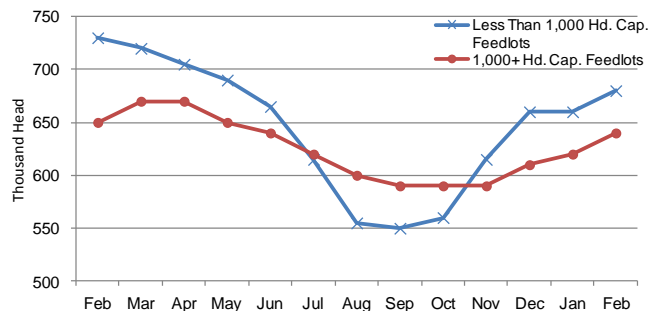
Placements during February totaled 140,000 head, a decrease of 26 percent from last month but up 4 percent from last year. Feedlots with a capacity greater than 1,000 head placed 71,000 head, down 29 percent from last month and down 16 percent from last year. Feedlots with a capacity less than 1,000 head placed 69,000 head. This is down 23 percent from last month but up 38 percent from last year.

Marketings for February were 123,000 head, down 15 percent from last month but up 3 percent from last year. Feedlots with a capacity greater than 1,000 head marketed 68,000 head, down 12 percent from last month but up 10 percent from last year. Feedlots with a capacity less than 1,000 head marketed 55,000 head, down 18 percent from last month and down 4 percent from last year. Other disappearance totaled 7,000 head.

Cattle on Feed, Inventory on all Feedlots, Iowa: 2011-2013



Cattle on Feed, Inventory by Feedlot Capacity, Iowa: Past 12 Months



All Cattle on Feed, Iowa

Item	Lots 1,000+ Head	Lots Less than 1,000 Head	All Lots
	(1,000 Head)	(1,000 Head)	(1,000 Head)
Cattle on Feed, February 1, 2013	640	680	1,320
February Placements	71	69	140
February Marketings	68	55	123
February Other Disappearance	3	4	7
Cattle on Feed, March 1, 2013	640	690	1,330

Cattle on Feed: Number on Feed, Placements, Marketings, and Other Disappearance by Month, 1,000+ Capacity Feedlots

[Cattle and calves on feed are animals for slaughter market being fed a ration of grain or other concentrates and are expected to produce a carcass that will grade select or better.]

State	Cattle on Feed March 1			Placements during February			Marketings during February			February Disappearance other than Slaughter ¹		
	2012	2013	'13 as % of '12	2012	2013	'13 as % of '12	2012	2013	'13 as % of '12	2012	2013	'13 as % of '12
	(1,000 Head)	(1,000 Head)	(Percent)	(1,000 Head)	(1,000 Head)	(Percent)	(1,000 Head)	(1,000 Head)	(Percent)	(1,000 Head)	(1,000 Head)	(Percent)
Arizona	279	270	97	25	23	92	21	27	129	1	1	100
California	500	480	96	50	48	96	53	46	87	2	2	100
Colorado	1,090	990	91	165	160	97	200	170	85	15	10	67
Idaho	230	225	98	37	36	97	41	35	85	1	1	100
Iowa	670	640	96	85	71	84	62	68	110	3	3	100
Kansas	2,200	2,050	93	370	295	80	385	345	90	15	10	67
Nebraska	2,570	2,430	95	410	350	85	390	380	97	20	10	50
Oklahoma	340	305	90	48	37	77	61	55	90	2	2	100
South Dakota ..	260	230	88	47	45	96	45	39	87	2	1	50
Texas	2,840	2,550	90	380	340	89	415	395	95	25	15	60
Washington	233	233	100	41	35	85	32	34	106	3	2	67
Other States	465	454	98	56	42	75	50	44	88	4	3	75
United States ..	11,677	10,857	93	1,714	1,482	86	1,755	1,638	93	93	60	65

(D) Withheld to avoid disclosing data for individual operations.

¹ Includes death loss, movement from feedlots to pasture, and shipments to other feedlots for further feeding.

United States Cattle on Feed

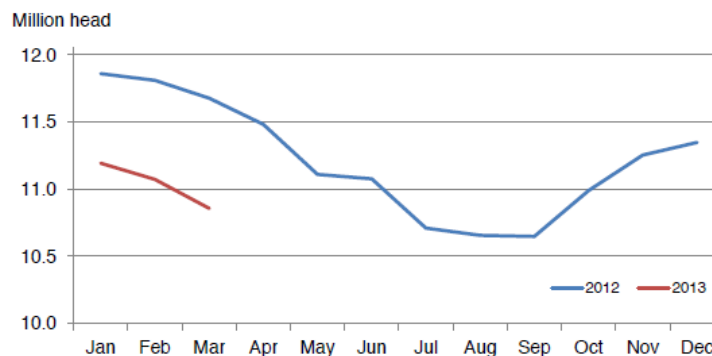
Cattle and calves on feed for slaughter market in the United States for feedlots with capacity of 1,000 or more head totaled 10.9 million head on March 1, 2013. The inventory was 7 percent below March 1, 2012.

Placements in feedlots during February totaled 1.48 million, 14 percent below 2012. Net placements were 1.42 million head. During February, placements of cattle and calves weighing less than 600 pounds were 355,000, 600-699 pounds were 270,000, 700-799 pounds were 407,000, and 800 pounds and greater were 450,000. Placements are the lowest for February since the series began in 1996.

Marketings of fed cattle during February totaled 1.64 million, 7 percent below 2012.

Other disappearance totaled 60,000 during February, 35 percent below 2012.

Cattle on Feed Inventory on 1,000+ Capacity Feedlots – United States



The complete report can be found under **Publications** on the USDA NASS website at www.nass.usda.gov.